

Marvell® StorFusion Fabric Assigned Port Worldwide Name (FA-WWN) with Marvell QLogic® Fibre Channel Adapters

Products Affected

Marvell QLogic	Description
2600 Series	Gen5 and Enhanced Gen5 16Gb Fibre Channel Adapters

1 Introduction

This application note provides instructions to system administrators for using the Fabric Assigned WWN (FA-WWN) feature on Marvell QLogic StorFusion™-enabled Fibre Channel Host Bus Adapters for servers and storage. Using either Brocade® Network Advisor (BNA) or Brocade Fabric OS® (FOS) CLI, an administrator can configure and pre-assign the storage and switch hardware, and even zone the SAN fabric—all at the port level—without having the servers or adapters on hand.

After the fabric has been assigned, and the adapters and storage are available, an administrator can configure the adapters to assume the manually pre-assigned WWNs using the FA-WWN tool, either the Marvell server boot *Fast!UTIL* command utility.

FA-WWN makes it much easier to deploy and replace fabric-attached servers, and to minimize the impact on SAN administrators. FA-WWN allows you to pre-assign the WWN of a physical adapter using *Fast!UTIL* during boot.

2 Prerequisites

Before you begin, ensure that the following components are installed:

- QConvergeConsole version 1.0.222 or later
- Brocade Gen5 16Gb Fibre Channel switch with BNA and FOS 7.3 or later
- Marvell QLogic 2600 Series Fibre Channel Host Bus Adapters with firmware version 8.2.1 or later

3 Disabling Ports and Pre-assigning the WWN Fabric in Brocade Network Advisor

Administrators have the option to automatically or manually pre-assign WWNs to adapters without the servers present or Fibre Channel Host Bus Adapters installed. To assign and configure the WWN, you must first disable the ports you want to pre-assign.

To disable a port:

1. Launch Brocade Network Advisor.
2. In the left pane, expand a network and switch node, and then right-click the port that you want to configure.
3. On the shortcut menu, point to **Enable/Disable**, and then click **Disable**.
4. To disable other ports that require configuration, repeat the previous steps.

To configure a port:

1. Launch Brocade Network Advisor.
2. In the left pane, expand a network node, and then right-click the switch that you want to configure.
3. On the shortcut menu, click **Fabric Assigned WWN**.
The Configure Fabric Assigned WWNs dialog box opens. You can choose to either automatically or manually assign a port, as detailed in the following procedures.

To automatically assign FA-WWN to a port:

1. In the BNA Configure Fabric Assigned WWNs dialog box, click **Auto**.
2. To enable the selected port, click **OK**.
3. To configure other ports, repeat the preceding steps.

To manually assign FA-WWN to a port:

1. In the BNA Configure Fabric Assigned WWNs dialog box, click **User**.
2. Select the port number that you want to modify, and then under **Fabric Assigned WWN**, type the WWN.
3. Click **OK**.
4. To configure other ports, repeat the preceding steps.

4 Configuring the Adapter for FA-WWN Using *Fast!UTIL*

After the new servers and adapters are available for FA-WWN configuration, an administrator can configure the ports by using the Marvell *Fast!UTIL* command utility (see [Section 4](#)) that is built into the Host Bus Adapter firmware and BIOS. *Fast!UTIL* is available during a server boot.

1. To configure an adapter for FA-WWN using *Fast!UTIL*:
2. During system power-on initialization, press the CTRL+Q or ALT+Q keys. [Figure 4-1](#) shows an example.

```

QLE2672 PCI3.0 Fibre Channel ROM BIOS Version 3.19
Copyright (C) QLogic Corporation 1993-2012. All rights reserved.
www.qlogic.com

Press <CTRL-Q> or <ALT-Q> for Fast!UTIL
  
```

Figure 4-1. *Fast!UTIL*: Boot Screen

3. Select the adapter port to which you want to assign the FA-WWN that was configured in BNA (see [Figure 4-2](#)), and then press the ENTER key.

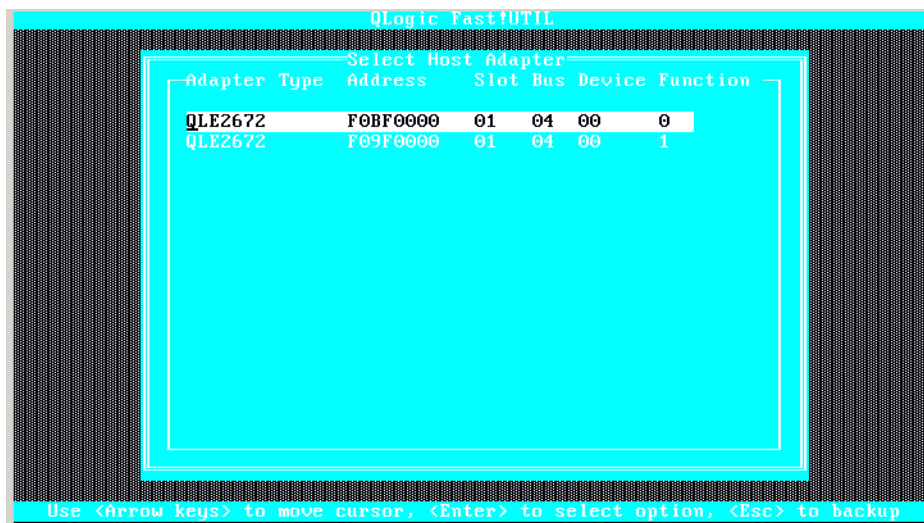


Figure 4-2. *Fast!UTIL*: Select Adapter Port

4. On the *Fast!UTIL* **Options** menu, select **Configuration Settings**.
5. On the **Configuration Settings** menu, select **Advanced Adapter Settings**.
6. On the **Advanced Adapter Settings** menu (see [Figure 4-3](#)):
 - a. Press the arrow keys to select **Fabric Assigned WWP**N.
 - b. Toggle the setting to **Enabled**.

c. Press ENTER.



Figure 4-3. Fast!UTIL: Fabric Assigned WWPN

7. Select **Save Changes**.
8. Select **Reboot System**.

Document Revision History
Revision A, February 8, 2016
Revision B, August 31, 2019
Revision C, April 28, 2021
Changes
Re-brand to new Marvell logo and template.
Removed all references to QConvergeConsole GUI, including the section "Using QConvergeConsole GUI to Configure an Adapter."

THIS DOCUMENT AND THE INFORMATION FURNISHED IN THIS DOCUMENT ARE PROVIDED "AS IS" WITHOUT ANY WARRANTY. MARVELL AND ITS AFFILIATES EXPRESSLY DISCLAIMS AND MAKES NO WITHOUT ANY WARRANTY. MARVELL AND ITS AFFILIATES EXPRESSLY DISCLAIMS AND MAKES NO WARRANTIES OR GUARANTEES, WHETHER EXPRESS, ORAL, IMPLIED, STATUTORY, ARISING BY OPERATION OF LAW, OR AS A RESULT OF USAGE OF TRADE, COURSE OF DEALING, OR COURSE OF PERFORMANCE, INCLUDING THE IMPLIED WARRANTIES OF MERCHANTABILITY, FITNESS FOR A PARTICULAR PURPOSE AND NON-INFRINGEMENT.

This document, including any software or firmware referenced in this document, is owned by Marvell or Marvell's licensors, and is protected by intellectual property laws. No license, express or implied, to any Marvell intellectual property rights is granted by this document. The information furnished in this document is provided for reference purposes only for use with Marvell products. It is the user's own responsibility to design or build products with this information. Marvell products are not authorized for use as critical components in medical devices, military systems, life or critical support devices, or related systems. Marvell is not liable, in whole or in part, and the user will indemnify and hold Marvell harmless for any claim, damage, or other liability related to any such use of Marvell products.

Marvell assumes no responsibility for the consequences of use of such information or for any infringement of patents or other rights of third parties that may result from its use. You may not use or facilitate the use of this document in connection with any infringement or other legal analysis concerning the Marvell products disclosed herein. Marvell and the Marvell logo are registered trademarks of Marvell or its affiliates. Please visit www.marvell.com for a complete list of Marvell trademarks and guidelines for use of such trademarks. Other names and brands may be claimed as the property of others.

Copyright

Copyright ©2021. Marvell and/or its affiliates. All rights reserved.